

# Climate Adaptive Planning and Program Actions Groton, Connecticut

Michael J. Murphy, AICP  
Director of Planning and Development

October 28, 2010

# Building Blocks for Groton's Local Adaptation Program

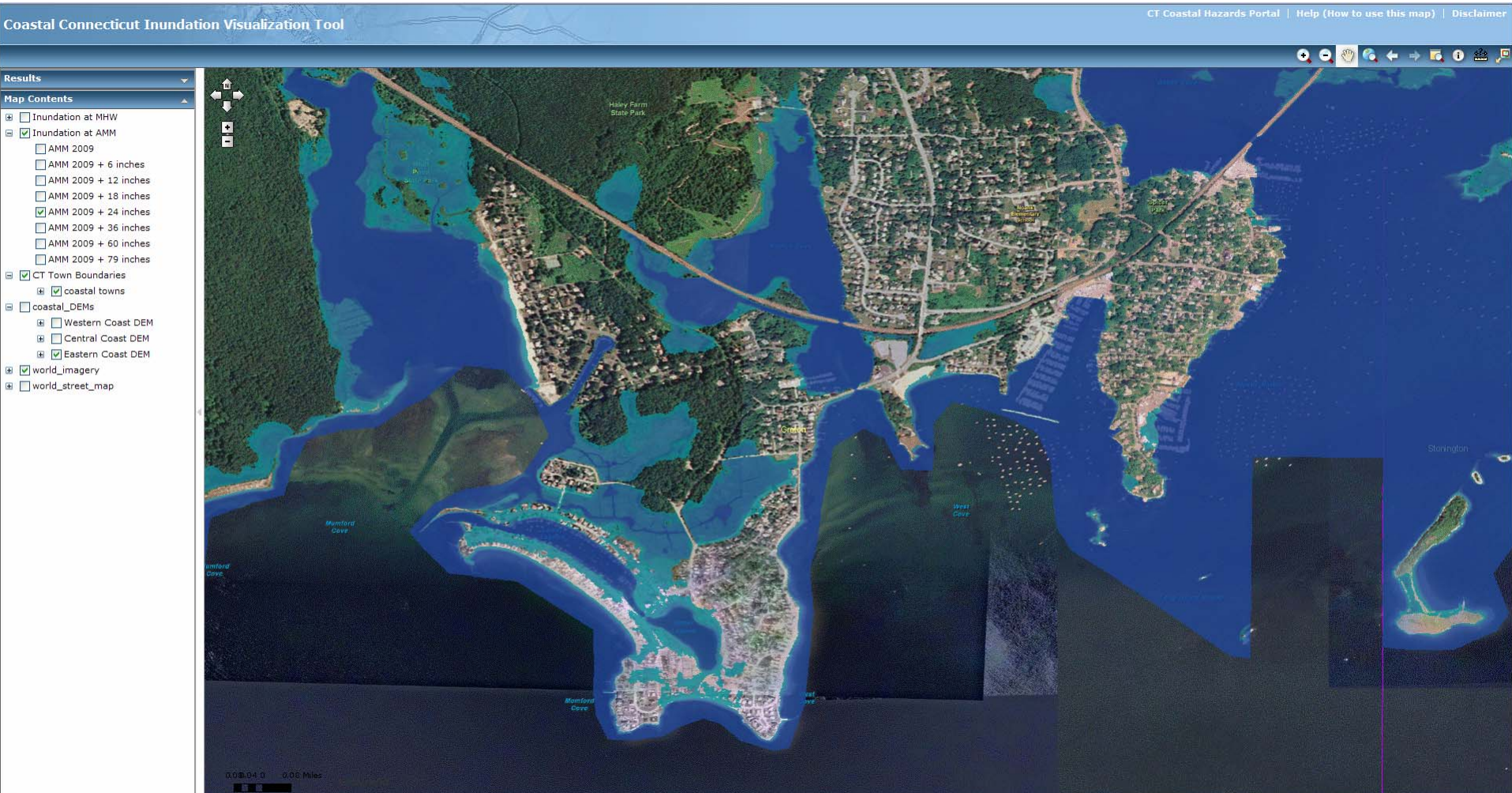
- Coastal Hazards Analysis and Management Program (CHAMP) Project
- Task Force on Climate Change and Sustainable Community
- Enhanced Resources Through Partnerships With Government, NGO's and Academia

# Building Blocks for Groton's Local Adaptation Program -Continued

- Professional Staff and Technical Capacity to Achieve Sustainability Goals, and Identify and Implement Projects
- Participation in Model Approach to Climate Adaptation Planning for Region
- Establish Communication Strategy and Groundwork for Effective Public Engagement

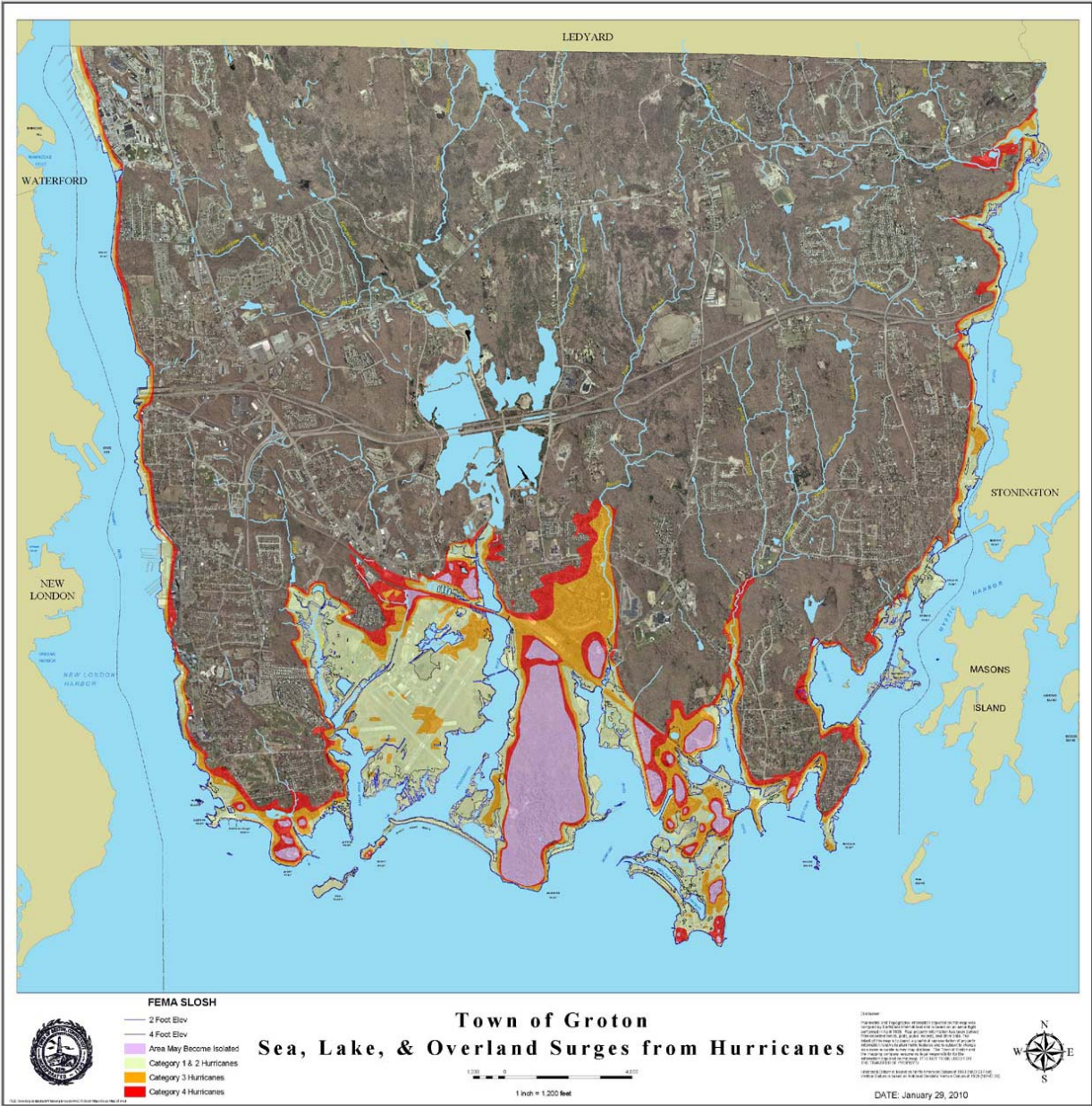


# Groton Long Point / Noank: 2009 AMM + 24" (2.0') SLR



# SLOSH MAP

- ACOE created Data for FEMA
- Displays storm surge impacts & scenarios
- Preliminary impact assessment
- Inserted 2' and 4' sea level rise contours
- Need to Integrate SLR with storm data



# Areas of Concern

- Utilities Infrastructure Networks
- Transportation Facilities
- Ecological Resources
- Isolation of Coastal Living Areas

# Sanitary Sewer Pump Station Network

Groton Long Point  
Study Area



Groton Long Point

North Street Pump Station

Sea Level Rise based on IPCC High Emissions Scenario : 3.13' NAVD

Beach Road Pump Station

Pacific Street Pump Station



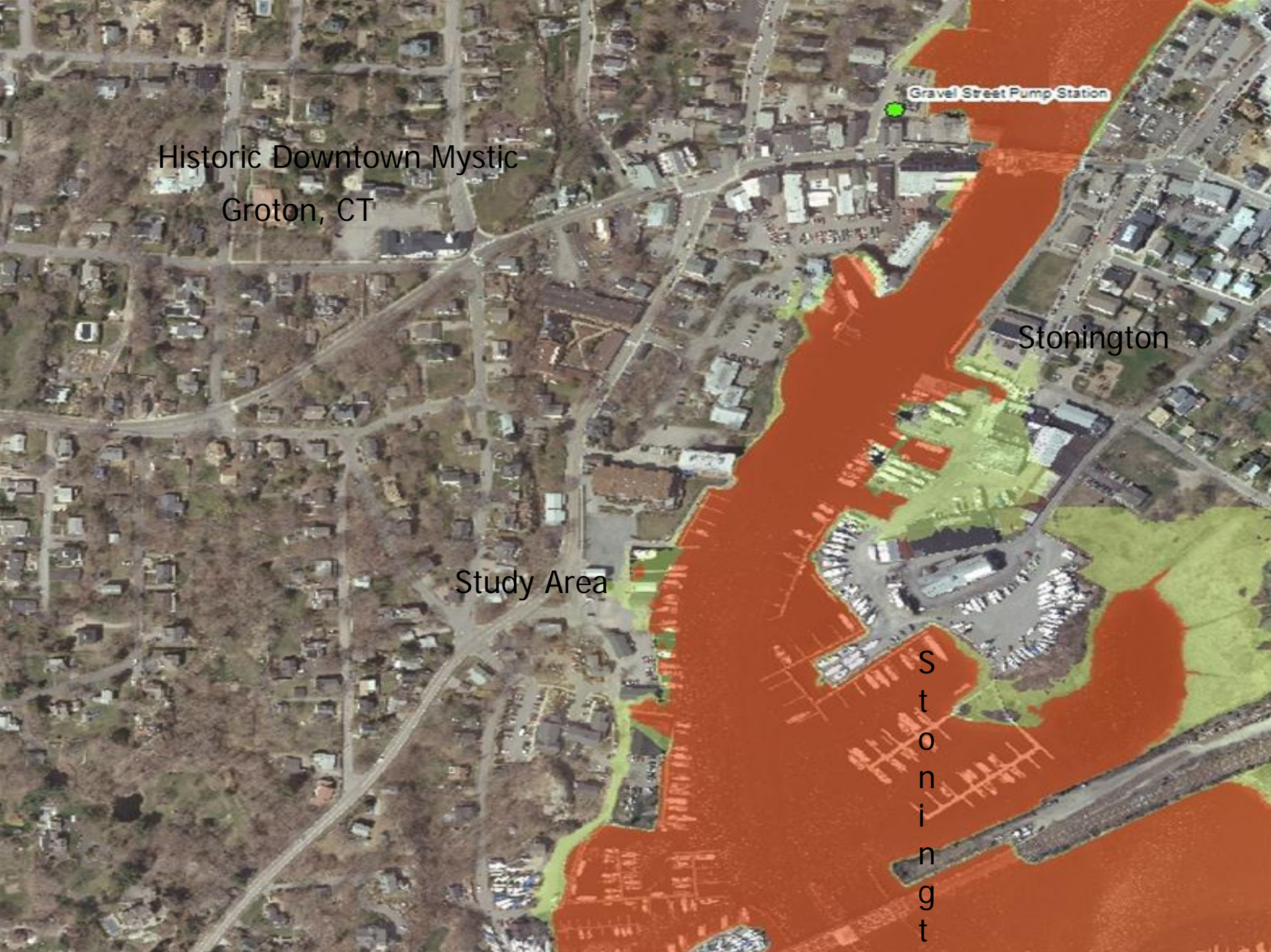
Historic Downtown Mystic  
Groton, CT

Gravel Street Pump Station

Stonington

Study Area

S  
t  
o  
n  
i  
n  
g  
t





Storm Sewer Outlets  
Impacted by Sea Level Rise  
and/or Storm Surge

# Public Infrastructure Investment

- Capital Improvement Program
  - Institutionalized project review
  - Criteria includes recognition of climate change impacts
  - Enhanced priority for inclusion of adaptation measures
  - Sustainability goals/guidelines
  - OPDS staff to assist departments with project development

# Next Steps

- Further Develop Tools for Risk Assessment
  - GIS display SLR/storm inundation scenarios as single layer
  - Evaluate and prioritize infrastructure asset and network vulnerabilities
  - Adjust to trends in SLR and/or storm severity
- Continue to Pursue Funding Opportunities and Increase Local Capacity for Adaptation Actions
- Formalize a Working Preparedness Committee
- Incorporate Resilience and Energy Themes into Upcoming Community Master Planning Process
- Consolidate Sustainability Policies - Energy Efficiency & Conservation (Mitigation) and Resilience (Adaptation) - in Climate Action Plan (CAP)